



Accounts Payable

Treasurer's Instruction 11 Reporting

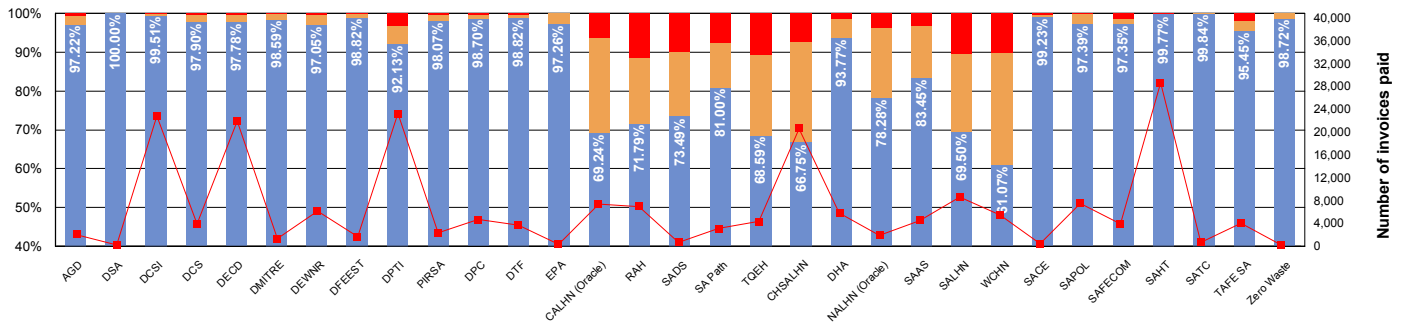
Invoice Payment Time by:

June 2014

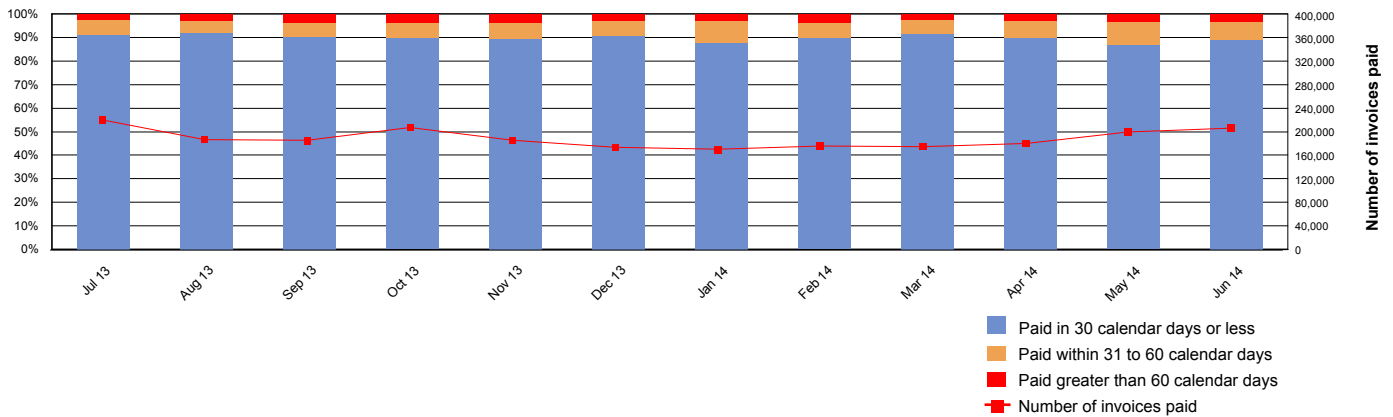
Volume

	SA Health		Agencies (excluding SA Health)		Total	
	Invoices	%	Invoices	%	Invoices	%
Invoices paid within 30 calendar days or less	52,974	72.27%	135,752	97.49%	188,726	88.79%
Invoices paid within 31 to 60 calendar days	14,679	20.03%	2,371	1.70%	17,050	8.02%
Invoices paid greater than 60 calendar days	5,649	7.71%	1,122	0.81%	6,771	3.19%
Total number of invoices paid	73,302		139,245		212,547	

Total Volume by Agency



Total Volume by Month



Volume - 2013/14 Year-to-date

	SA Health		Agencies (excluding SA Health)		Total	
	Invoices	%	Invoices	%	Invoices	%
■	642,482	76.67%	1,456,416	97.02%	2,098,898	89.73%
■	135,372	16.15%	32,488	2.16%	167,860	7.18%
■	60,105	7.17%	12,209	0.81%	72,314	3.09%
Total	837,959		1,501,113		2,339,072	

Please note: The Invoice Payment Performance for (February & March 2014) has been retrospectively adjusted following authorised corrections. The revised performance is reflected in the year-to-date data provided in this report.



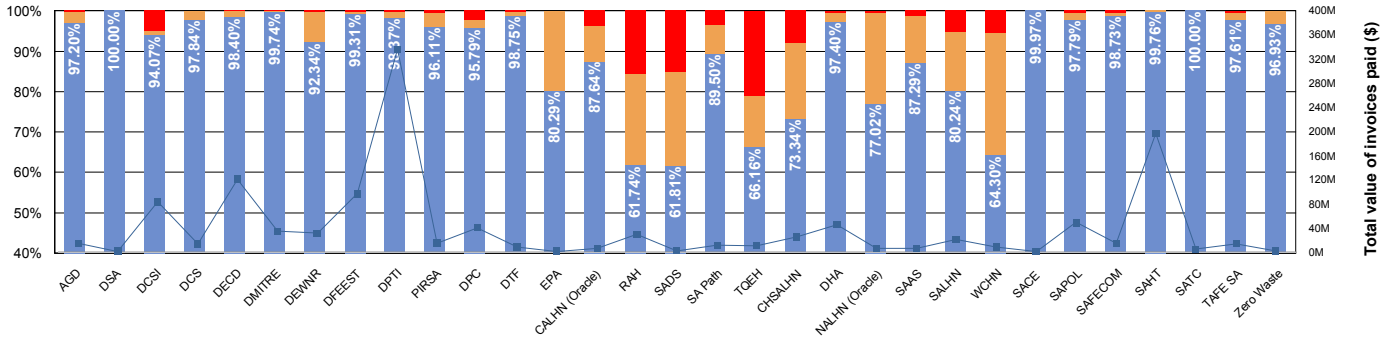
Accounts Payable

Treasurer's Instruction 11 Reporting

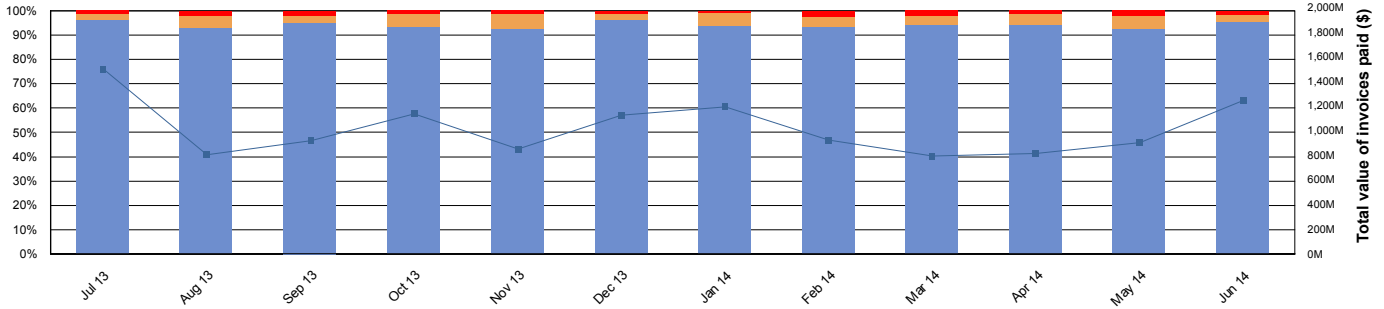
Invoice Payment Time by:

Value	June 2014					
	SA Health		Agencies (excluding SA Health)		Total	
Invoices paid within 30 calendar days or less	\$140,770,867.99	79.51%	\$ 1,053,104,471.67	98.06%	\$1,193,875,339.66	95.43%
Invoices paid within 31 to 60 calendar days	\$24,427,401.87	13.80%	\$ 13,595,534.51	1.27%	\$38,022,936.38	3.04%
Invoices paid greater than 60 calendar days	\$11,851,323.11	6.69%	\$ 7,234,982.24	0.67%	\$19,086,305.35	1.53%
Total value of invoices paid	\$177,049,592.97		\$ 1,073,934,988.42		\$1,250,984,581.39	

Total Value by Agency



Total Value by Month



- Paid in 30 calendar days or less
- Paid within 31 to 60 calendar days
- Paid greater than 60 calendar days
- Total value of invoices paid

Value - 2013/14 Year-to-date						
	SA Health		Agencies (excluding SA Health)		Total	
■	\$1,806,683,600.33	82.28%	\$ 9,767,773,365.89	96.89%	\$ 11,574,456,966.22	94.28%
■	\$273,030,909.35	12.43%	\$ 239,562,883.38	2.38%	\$ 512,593,792.73	4.18%
■	\$116,142,548.38	5.29%	\$ 73,914,894.34	0.73%	\$ 190,057,442.72	1.55%
Total	\$2,195,857,058.06		\$ 10,081,251,143.61		\$ 12,277,108,201.67	